

Interface

- Highly flexible and user-friendly
- Supports novice through expert
- Integrated with GibbsCAM
- EDM file/VNC file association

Geometry

- Flexible creation
 - CAD geometry imported into GibbsCAM
 - Created using GibbsCAM
 - Combination of both
- Optional grid lines
- Scale, rotate and shift geometry
- Dimensioning
- Line leader text
- Part Geometry/Operation Associativity

Visualization

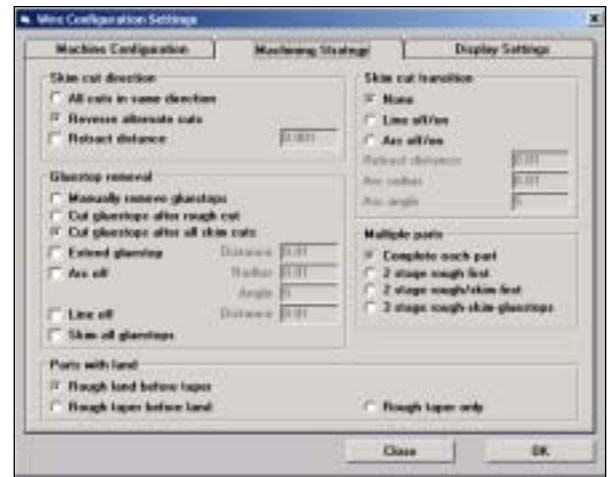
- User settable color for
 - Background
 - Wire path animation
- Viewing modes
 - XY,XZ, YZ views
 - Isometric view
 - Interactive rotation
 - Multiple viewports
- Dynamic viewing controls
 - Mouse 3D rotation
 - Mouse pan
 - Mouse wheel zoom
- Zooming

Analysis

- Display marker information in window
 - Position
 - Editable entry/exit radius
 - Single feature cut specification
- Full color animation of EDM wire
- Automatic check of wire guides against machine UV travel limits
- Automatic operation sheet generation displaying all pertinent information
- Operation time planning reports

Technology

- Definable part information, including
 - Stock size
 - Dielectric fluid
 - Wire material
 - Wire starting position
- Full control of
 - Entry/Exit radius
 - Start/End angles
 - Cut angle



- Conic/Cylindrical
- Wire synchronization points
- Upper/lower start positions
- Machine event sequence
- Dwell between reverse cuts
- EPAK setting tables for reuse
- Auto threading
- No core cutting
- Glue stops
- Automatic skim cuts
- Automatic calculation of taper over multiple part thicknesses
- Automatic 4-axis synchronization
- Automatic corner looping
- Operation manipulation
 - Reverse direction
 - Modify taper angle
- Posting
 - Utilize specific functionality of each machine control/combination
 - No editing required to run program
 - Identical to what is seen on screen
 - Supports Inch/Metric and Absolute/Incremental
 - Subroutine output for part patterns
 - Output toolpath data or part profile
 - Flag in post to indicate if part is upside down
 - Post variables for Part Name, Part Filename, Tape Name
 - Integrated, on-line post help
 - Posts provided for:
 - Agie 123
 - Agie Evolution
 - Charmilles 310
 - Charmilles 330
 - Charmilles Robo Fil
 - Charmilles Millennium
 - Fanuc Alpha
 - Fanuc O
 - Hitachi
 - Japax
 - Mitsubishi FX
 - Sodick Mark 25