

Basic GibbsCAM Overview/Production Modules CAM/CNC Programming System

GibbsCAM® is a state-of-the-art, PC-based computer-aided manufacturing (CAM) system for programming computer numerically controlled (CNC) machine tools. GibbsCAM's graphical user interface was designed for machinists by machinists, resulting in a user environment that is both familiar and efficient. This manufacturing orientation ensures that GibbsCAM's powerful functionality is also extremely easy to learn and use. GibbsCAM's free-form interaction style allows you to move easily between geometry creation, toolpath creation, process visualization/verification and post processing. GibbsCAM's ease-of-use, programming efficiency, speed and short training time make GibbsCAM the CAM industry's ease-of-use leader and the best tool for programming your parts.

GibbsCAM is organized as a single application. The base package's capabilities can be extended through the addition of seamlessly integrated options. This way the system can be configured for your initial needs and gradually expanded as your needs grow, protecting your investment. Base packages and options include:

Packages

- ▶ **Milling Package:** 2-, 2.5- and 3-axis milling with simple 4th-axis positioning
- ▶ **Turning Package:** 2-axis turning
- ▶ **Mill/Turn Package:** Live tooling, including support of X,Y, Z, C and B-axis

Options

- ▶ **Advanced CS Option:** (Coordinate Systems) 4th- and 5th-axis rotary positioning
- ▶ **Rotary Milling Option:** Simultaneous rotary milling, supporting flat or radial geometry
- ▶ **4-Axis Option:** Simultaneous rotary milling, support radially prismatic solid geometry
- ▶ **TMS Option:** (Tombstone Management System) Multi-part layout and programming for tombstone fixtures
- ▶ **5-Axis Option:** 5-axis simultaneous milling of surfaces and solids
- ▶ **Solids Import Option:** Import a solid model and machine it in wire-frame from extracted edges
- ▶ **2.5D Solids Option:** Simple solid modeling and solid-based machining of 2-, 2.5- and simple 3-axis part shapes
- ▶ **SolidSurfacer® Option:** Advanced surface and solid modeling and 3-axis surface machining
- ▶ **MTM™ Option:** (Multi-Task Machining) Turning with multiple spindles and tool groups and milling (C, Y and B-axes per tool group with Mill option)
- ▶ **Machine Simulation Option:** Build a machine and simulate machine tool motion
- ▶ **Wire-EDM Option:** 2- through 4-axis Wire-EDM
- ▶ **VoluMill™ Wireframe and VoluMill Solids:** Adds powerful high speed roughing functionality and controlled material removal for GibbsCAM milling.

GibbsCAM's data exchange capabilities are able to access the broadest range of native and industry standard CAD data formats allowing you to receive data files from any CAD system. GibbsCAM is certified under the Autodesk Inventor Certified Program, is a Siemens Solution Partner Program-PLM for Solid Edge product, and is a SolidWorks Certified CAM Product.

GibbsCAM is Compatible with Windows® 7 and Certified for Windows Vista.™



Overall System Capabilities

Environment

Unique Graphical User Interface

GibbsCAM's graphical user interface was designed for machinists by machinists and uses the latest standard Windows pull-down menus, icons and buttons capabilities. The user environment is further extended by representing aspects of the process (tools, operations, toolpath, hidden-line toolpath in ToolSim mode) as tiles which are manipulated through a drag-and-drop style of graphical interaction.

Flexibility

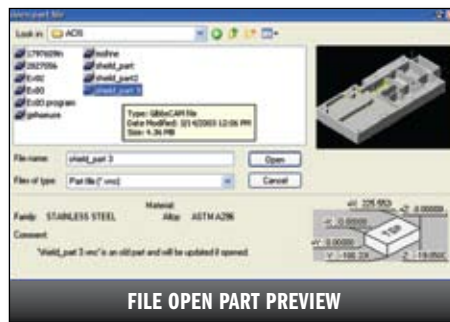
GibbsCAM's modeless interface provides the ability to switch from one dialog to another mid-stream without completing the previous task. This allows you to work in a totally free-form manner with no constraints on the order of how you do different tasks, such as geometry and toolpath creation.

Associativity

Full associativity is maintained between geometry, process and resulting toolpath, allowing any items affected by a change to be automatically updated.

Dynamic Viewing

An on-screen virtual trackball allows you to easily control the part view from any standard orientation (top, front, right, isometric) or any orientation by rotating the trackball. Zoom, unzoom, pan and redraw are also standard tools directly accessed through GibbsCAM's viewing control.



Multiple Viewports

Configure views using the Viewport Configuration Manager.

User-Preference Interface

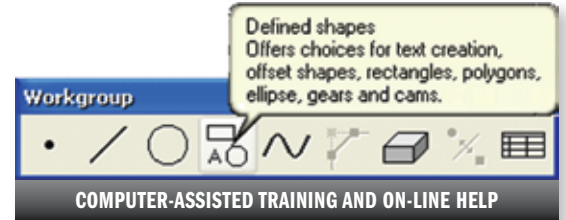
Multiple interface levels are available, which only present the necessary interface elements, significantly reducing the complexity of the interface and greatly improving your programming efficiency.

Input Devices

Multiple input devices, including mouse, trackball, and 3D mouse, are supported.

Computer-Assisted Training and Online Help

Online training is provided through contextually sensitive help, on-screen reference balloons and action-specific prompting.



Printed Documentation

Easy to read and use manuals, complete with in-depth reference sections, high-quality graphics and tutorials are conveniently available individually from our Lulu.com site.

Inch and Metric

Both inch (imperial) and metric measurement systems are supported with quick and easy conversion between them.

Mathematical Tools

Perform mathematical functions in all text input fields including geometry input fields. Convert inch to metric by pressing keyboard letters I or M or vice-versa; calculate Pi by pressing letter P; calculate sine, cosine or tangent by pressing S, C or T; calculate rotary (wrapped) geometry ($A * R * \text{Pi} / 180$) by turning on rotary mode menus to show X, A and R; or enter any mathematical expression ($-5/2+1$) into any text field.

Direct Measurement Input

Measurements can be captured directly from geometry and solids into text input fields, allowing you to input values into selected fields automatically.

File Open Part Preview

A rendered image preview and file information allow you to quickly identify the desired part in a crowded directory of many parts.

CAD Interoperability

DXF, DWG and IGES import formats are supported with every GibbsCAM system. Support for other industry standard and proprietary formats is available with other modules or data exchange options.

Machining

Chain-Free Toolpath Creation

Toolpath start and end points are set graphically, never requiring you to chain or “break” geometry.

Toolpath Start-Point and End-Point Editing

Dynamically adjust the start or end point of toolpath without creating special geometry.

Editable Toolpath

Ability to modify existing toolpath by converting it to geometry, modifying that geometry, and then applying new toolpath with desired machining parameters.

Transform Toolpath

Duplicate and translate, rotate or mirror the toolpath.

Adjustable Feed Rates

Modify the feed rate anywhere on the toolpath. Utility markers provide complete control and accuracy.

Freehand Machining

Create freehand shapes easily with the mouse tool for machining geometry and roughing operations.

Material Library

Calculate speed and feed rates using stored user-defined information on the cutting conditions for various types of materials. Import custom libraries and edit content.

Operation Lists

Easily rearrange the order of machining operations or access individual operations for modification through a graphical, object-oriented interface.

Optimized Operation Order

Automatically sort all machining operations into an optimized order that minimizes tool changes.

Advanced Machining

Advanced machining capabilities, such as zig-zag contour, trochoidal and others, are included.

Material-Only Rest Machining

Face milling, contour and pocket cycles automatically adjust to pre-machined features and odd shaped stock to eliminate cutting air.

Multiple Process Programming

Simultaneously program the same geometry with multiple processes, such as roughing, semi-roughing and finishing or multi-tool hole processes.

Automatic Reprogramming

Automatically reprocess and update operations with full associativity to reflect changes made to geometry, tools or process information.

Knowledge-Based Programming

Machining processes can be saved for use on any number of other parts reducing programming time and allowing for standardization.

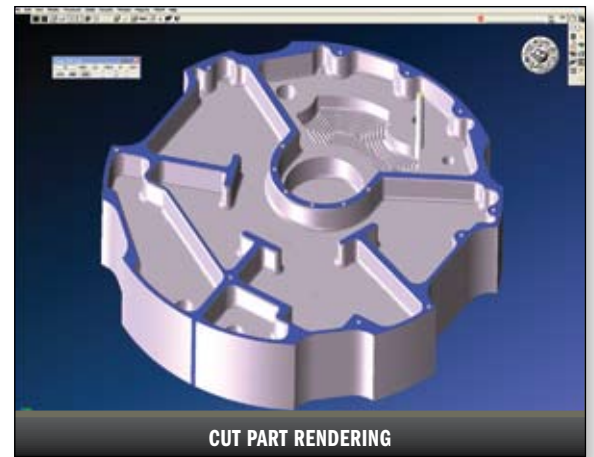
Estimated Run Time

Calculate estimated run times for mill, lathe and mill/turn programs.

Visualization/Verification

Real-Time, 3D Cut Part Rendering

An accurate simulation of the toolpath enables you to see the tool removing material from a solid piece of stock, creating a realistic preview of the machining. Blue represents uncut areas, while red indicates areas of tool interference. Dynamic view orientation (pan, rotate, zoom) allows close examination.



Render Control

View the part being machined one feature at a time, one operation at a time and with user-specified operations highlighted. Break points can be set to stop rendering at desired operations. Tool display can be set to solid, transparent or invisible. Lathe and mill tool holders can be optionally displayed. Alternately, part motion can be animated.

Advanced Solids-Based Process Simulation

With the addition of any solids-based GibbsCAM module, a number of advanced visualization/verification capabilities are available, such as cut part/finished part compare, transparent stock and work-in-process stock body output.

Integrated Rendering

All capabilities of GibbsCAM – milling, turning, mill-turn, rotary milling and MTM – are supported by Cut Part Rendering.

Show Position

View a dynamically updating toolpath position indicator in both mill and lathe environments and inspect position, depth and thickness of cut part rendered work-in-process shape.

Shop Floor Documentation

Dimensioning

Apply dimensions and annotation to geometry to create shop floor documentation.

Summaries

View and/or print summaries of workgroup geometry, tool lists and machining operations for use in part set-up.

Reports

Generate complete reports of set-up and run time of a part, as well as part, tool list and operations reports with embedded graphics with interface to Microsoft Excel (2003, 2007 and 2010). Report templates can be customized by the user.

Post Processing

Utility Data

Allows for additional customization of a completed operation.

Quality Library Post Processors

Allows you the option of leveraging a library of over 10,000 Gibbs post processors already perfected by Gibbs and Associates.

PostHASTE for GibbsCAM

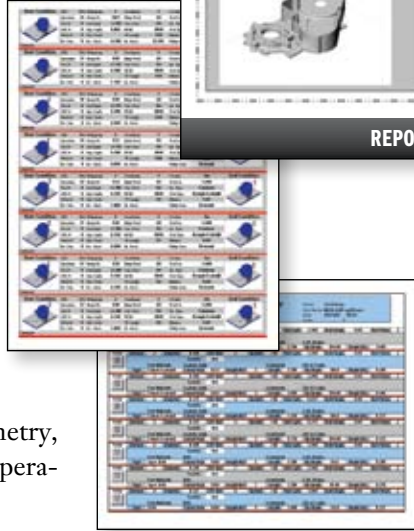
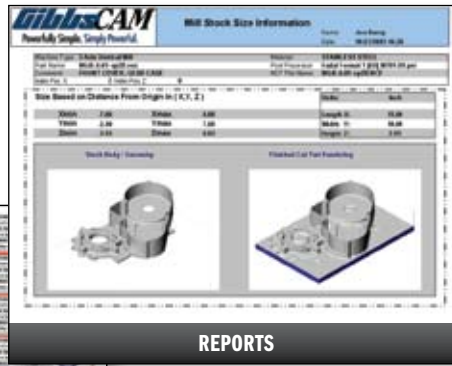
Create your own posts with a template-based, generic post processor sub-system for 3-axis milling and 2-axis turning. A collection of over 225 templates of common machine/control configurations is also included.

Custom Post Processors

Custom Gibbs post processors are optionally available for any machine/control combination. Designed to your specifications, they are guaranteed to run with no editing once properly configured.

Advanced Gibbs Post Processor Capabilities

Optional standard and custom Gibbs post processors include capabilities



APT CL

Generates APT CL output for 3rd party post generators.

Editing/Communications

View, edit and print the final G-code program. The included editor can be set to automatically launch after post processing code or you can substitute your own choice of editor. Advanced full user-defined RS-232-C Communication capabilities are available in the communications package.

Production Milling Package

Full 2- and 2.5-Axis Programming

Wireframe machining with full functionality for contouring, pocketing with unlimited bosses/islands, thread milling, face milling, drilling, tapping and boring (bore, fine bore, back-bore), 2D/3D spiral creation, and many drill cycles.

Stock Wizard

Automated wizard creation of simple rectangular or round stock shapes with or without pockets.

Hole Wizard

Wizard-style interface guides you through defining tooling and processes for 8 different hole types using encoded user preferences for hole making.

Drill Canned Cycles

Most drill-type canned cycles are supported with user-definable value settings.

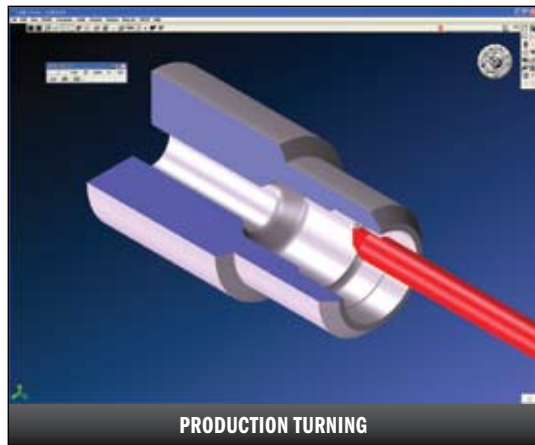
Simple 4th-Axis Positioning

Position and mill or multiple position subroutines.



Advanced Pocketing Routines

Pocket any number of shapes simultaneously with unlimited bosses/islands using an optimized tool-path. Machine open-sided pockets and pilot drill and/or auto pocket corner drill. You can also specify breadth first or depth first machining strategies.



Pocket Entry Choices

You can choose how pockets are machined. Entry options include auto plunge, user plunge, ramp, periphery ramp and helix.

2.5-Axis Wall Control

Contours and pockets may be machined with vertical 90° walls, tapered walls with top and bottom fillets or user-defined swept shapes.

Face Milling

Automatic cycles to clean material off the top of a part, including spiral, zig-zag, back and forth and one direction patterns.

Drilling Subroutines and Sorting

Drilling cycles include common drill patterns in subroutines and several sorting options including S-pattern, closest hole next and reverse patterns.

Thread Milling

Create ID and OD threads easily. Just select a point or circle and define the thread; the rest is automatic. Also supports milling of tapered threads such as NOT and others.

Chamfer and Radius Milling

Chamfer or radius tops of parts easily.

Engraving

Machine artwork and all TrueType fonts.

Cutter Radius Compensation

Supports tool edge and tool center compensation techniques with ability to activate compensation per operation with a check-box.

Entry/Exit Radius

Blend on and off a cut shape for a clean finish with easily selectable cutter compensation. Advanced entry/exit provides additional control.

Production Turning Package

Full 2-Axis Programming

Wireframe machining with full functionality for contouring, automatic roughing, multiple hills and valleys, plunge roughing, threading, repetitive shape roughing, drilling, tapping and boring.

Advanced Roughing Routines

Includes turn roughing cycles for plunge roughing with automatic shoulder stroking, and pattern shift roughing with constant path and constant step over choices.

Canned Cycle Support

Includes face, OD/ID and casting canned cycles for roughing and finishing operations as well as most drill-type cycles.

Forward and Reverse Roughing

Toolpaths can be defined so the tool cuts in both directions or in one direction only.

No Tool Dragging

Automatically calculate toolpaths for optimal cutting, so the tool is always cutting in a forward insert direction.

Material Only Roughing and Contouring

Automatically calculates entry/exit and toolpath moves to reduce programming time and eliminate air-cutting.

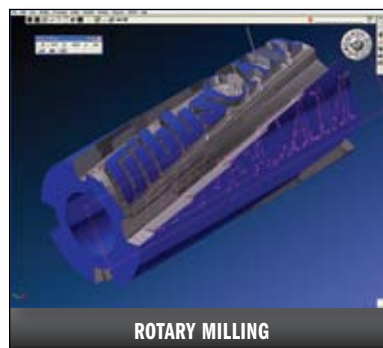
Automatic Clearance

Keeps track of material left on the part at all times and dynamically calculates clearance moves so tool is kept at an optimal distance as it moves around the part.

Threading

Built-in data library for all pertinent threading information, including the following standards: UN, UNJ, API, ISO, NPT, BSPT, 55 Whitworth, 60° partial, 55° partial, RD(DIN), TR(DIN), ACME,

Stub-ACME, Buttress, and others. Supports top-notch, LT, cresting and multi-form inserts. Infeeds include balanced, single-edge, single-edge alternating and user specified and depth of cut control. Also supports multi-start threads and auto spring passes.



Milling and Turning Packages

(Functionality available when combined together)

C-Axis Programming and Live Tooling

When GibbsCAM's milling and turning modules are combined, C-axis and live tooling capabilities for any number of tools are supported.

Face and Diameter Milling Operations

Perform milling operations on both the face and diameter of the lathe stock including the machining of slots, holes, cross-drilling, pocketing, face milling and face drilling. Also includes the ability to contour on the face of a component as well as the diameter.

Full Cut Part Rendering Support

GibbsCAM's Cut Part Rendering feature completely supports the Mill/Turn capability to provide an accurate representation of the process and the finished part.

Y- and B-Axis Support

Ability to program toolpaths requiring Y-axis and/or B-axis mill work as well as B-axis angular reorientation for turning operations.

Advanced CS Option

Coordinate Systems

Multiple Coordinate Systems

Workplanes can be defined in any 3D orientation on the part to create and machine geometry. Also useful for programming multiple part orientations and vise locations.

Tombstone Machining

Machine multiple sides of a part or fixture using 4th- or 5th-axis rotary table positioning.

5th-Axis Rotary Positioning

Automatically calculate A- and B-axis rotations from user-defined workplanes.

Rotary Milling Option*

Allows you to machine radial or wrapped flat geometry rotating around one axis. Also applicable for face and OD milling for mill/turn and MTM machines.

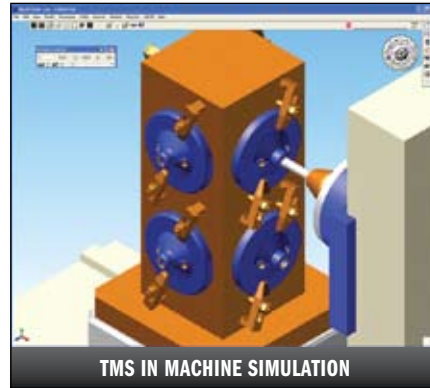
4-Axis Option*

Allows you to machine radially prismatic solid models by rotating around one axis. Supports off-center Y-axis machining for non-radial parts.

TMS Option*

Tombstone Management System

Simplifies positioning and programming of multiple parts on tombstone fixtures, automatically generating the corresponding work fixture offsets and rotary moves.



5-Axis Option*

Specifically developed to provide a powerful way to program 4- and 5-axis CNC machine tools easily.

Solids Import Option*

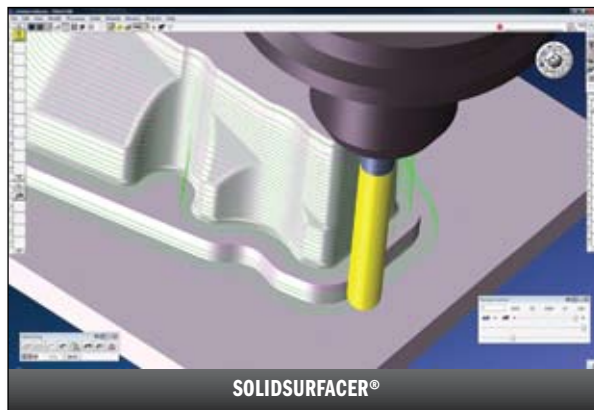
Adds ability to import a solid model and then machine in wire-frame from extracted edges.

2.5D Solids Option*

Adds solid modeling and machining of 2.5D shapes to GibbsCAM. Also includes Automatic Feature Recognition of holes.

SolidSurfacer® Option*

Includes Advanced 3D with High-Speed Machining (HSM) capabilities. Adds 3D surface and solid modeling and multi-surface milling to GibbsCAM.



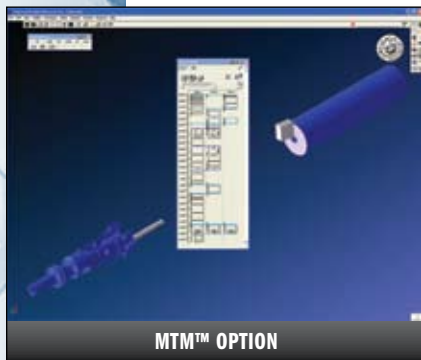
*See GibbsCAM Option database for full details

MTM Option*

Multi-Task Machining

Multi-Spindle/Turret Support

Adds support for programming multi-spindles and multi-turrets all operating at the same time. The innovative Sync Manager allows complex process timing relationships to be graphically visualized and optimized. Supports a wide variety of utility operations.



MTM Post Processors

GibbsCAM excels in providing uniquely configured MTM and swiss-style machining post processors regardless of machine configuration.

Machine Simulation Option*

Adds the ability to create machine tool models and perform simulation of machine tool motions to optimize throughput and identify program errors before running program on actual machine tool.

Wire-EDM Option*

2-/4-axis Support

Adds support for 2-/4-axis Wire-EDM devices with taper and lands. EPAK table support allows settings to be stored and reused.

*See GibbsCAM Option datasheet for full details

VoluMill™ Option

A milling toolpath engine for ultra high-performance 2- and 3-axis roughing which reduces cycle times, extends tool life and reduces stress on machine tools.

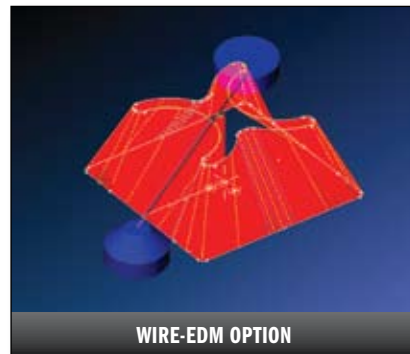
CAD Interoperability Options*

GibbsCAM support for the widest range of industry standard and native CAD formats, including: ACIS(SAT), Parasolid, Granite, DXF, DWG, IGES, VDA-FS, STEP AP203 and AP214, Autodesk Inventor, CATIA V4 and V5, KeyCreator, Pro/ENGINEER, Rhinoceros, Solid Edge, SolidWorks and UGS/NX.

Material Library Database

Speeds/Feeds Library

CUTDATA™ provides over 71,000 recommended speeds, feeds, tool material, etc. for integration and access by the Material Library capability of the system.



Customer Support

Reseller Distribution Channel Local support for customers is provided by a worldwide channel of GibbsCAM Resellers.

Training Training is available through local GibbsCAM Resellers or at training classes held at the Gibbs office in California, USA.

Gibbs Maintenance Program Annual enrollment in the Gibbs Maintenance Program keeps your GibbsCAM software up-to-date, allowing you to take advantage of GibbsCAM's innovative capabilities as they become available. For more details about this program, contact your local GibbsCAM Reseller.

Gibbs Website - www.GibbsCAM.com If enrolled in the GibbsCAM Maintenance Program, you can download the latest versions of GibbsCAM software in-between major upgrades, including interim versions. The site also contains the latest GibbsCAM product information, technical support files, customer success stories, technical articles, training videos and much more.



© 2010 Gibbs and Associates, a Cimatron Company. All rights reserved. The Gibbs and GibbsCAM logos, GibbsCAM, Gibbs, Virtual Gibbs, SolidSurfacer and "Powerfully Simple. Simply Powerful." are either trademark(s) or registered trademark(s) of Gibbs and Associates in the United States and/or other countries. Microsoft, Vista, Windows, and the Windows logo are trademarks of the Microsoft group of companies. All other brand or product names are trademarks or registered trademarks of their respective owners. This document is for information purposes and is subject to change.